

This interface card is used mounting on D Series nest slot. It has RS-485 reference communication port and relays communication data of D series signal conditioners and YOKOGAWA field instruments to upper system.

Communication protocol for upper computer can switch DSC2 upper communication protocol or BRAIN protocol.

In case of DSC2 upper communication protocol, application program on personal computer is made by user and can communicate with D series signal conditioners.

In case of BRAIN protocol, the function is same as DSC Communication Interface Card.

As output values from signal conditioners on each slot are always scanned (scanning time : within 1 second for 16 slots) by mainbody itself, data for 16 slots can be returned at the same time against bloc readout command received from upper computer.

It also has communication connector for Handy Terminal on front face and can communicate with signal conditioners in optional slot of the nest through JHT200/JHT-100 Handy Terminal.

D S C 2

Model _____

Specifications of Upper Communication

Interface : RS-485 reference *1
Communication method : Half duplex communication
Synchronizing method : Start-stop synchronizing type
Transmission speed (bps) : Can setup at 9600, 4800, 2400, 1200, 600
(Setup at 9600bps when shipment from factory)
Data format : Start bit : 1 bit
Data code : 8 bits fixed
Parity bit : None/even/odd
(Setup at None when shipment from factory)
Stop bit : 1 bit fixed
Error detect : Parity check
Sumcheck : Simply adding 2 bytes
Xon/Xoff control : None
End character designation : Yes (CR 1 character)
Connectable nest quantity : Maximum 15 nests
Transmission distance : Maximum 20m *1
Upper communication protocol : BRAIN protocol
DSC2 upper communication protocol *2

Standard Performance

Temperature : 0~50°C
Humidity : 5~90% RH
(no condensation)
Power voltage : 24V DC±10%
(ripple content below 5%)
Current dissipation : 100mA

Mounting & Shape

Mounting method : Nest storing
(Connect to signal and power cables through back board and connector)
External dimension : 95x23.6x112.6mm (HxWxD)
Weight : About 190g

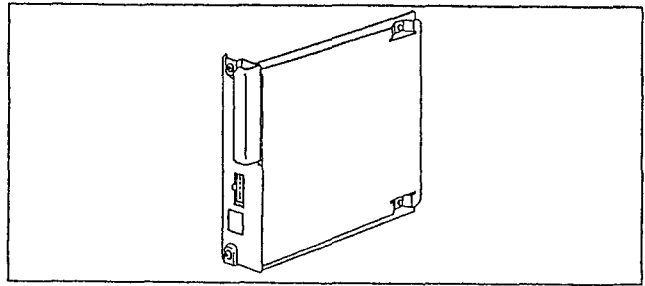
Accessories

Tag Number Label : 1

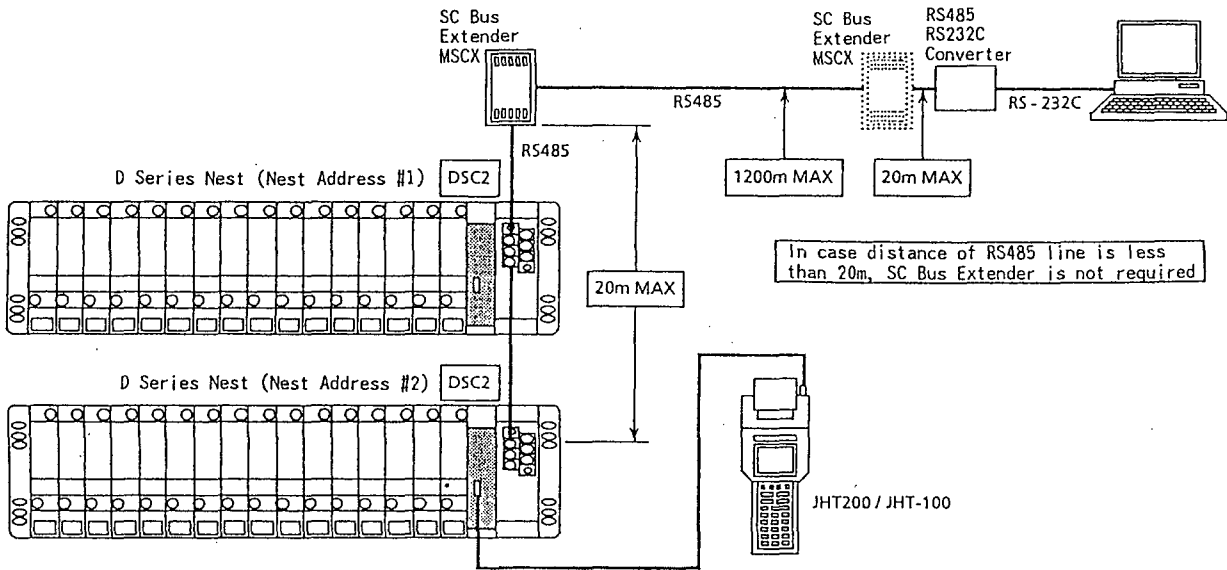
*1 This RS-485 port is not isolated from chassis earth. SG is same electrical level as chassis earth. Therefore, transmission distance is limited to 20m. If long distance transmission (maximum 1.2 km) is required, use SC Bus Extender, MSCX.

*2 DSC2 upper system communication protocol : Character base communication protocol to support function necessary for communication from upper system computer in BRAIN communication protocol.
① Specify address in communication item table of signal conditioners and access to each communication item.
② Can communicate with present and newly developed signal conditioners through communication item table.
③ Character base communication.
④ Communication frame format should be referred to format used in personal computer link module of YOKOGAWA FA500 Sequencer.

Detailed information for DSC2 upper communication protocol is available. To make out program using this card, please request 「IM JD83-01-01」.

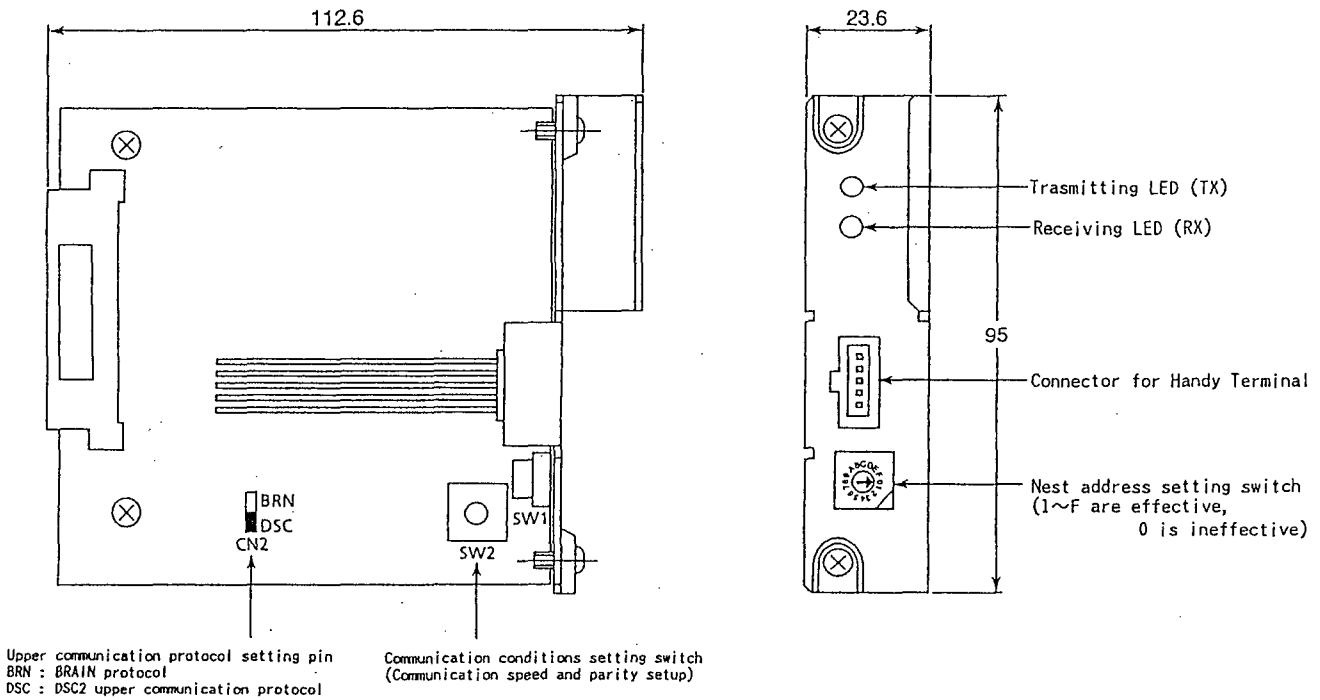


Example for connection to system using DSC2



EXTERNAL DIMENSION

Unit : mm



Subject to change without notice for grade up quality and performance